



# Welcome


Today is about WE, how we can collectively work together to accomplish the mission of the Conservancy. We all have similar goals for the Conservancy, it's mission and it's properties.



The Conservancy has an enormous task, and we can't accomplish without the invaluable partners in this room and countless others that couldn't be here today.



# Setting a Baseline and Transparency



Today is also about transparency and setting a shared baseline of understanding. We are giving everyone in the room the opportunity to understand the Conservancy and understand the path in front of it.



# Agenda

- ▶ Today, we hope you enjoy hearing the overview of the Conservancy, Parkway, hearing from its partners and grantees, learning about the projects in the works, and considering projects that can be accomplished in the future.

- ▶ It wouldn't be fair if we didn't include the realities of being a state agency and the funding available to complete projects. Together we will look at the ways that we can move forward together to provide a Parkway that benefits the environment, the wildlife, the public and our community.

# Our Mission

The San Joaquin River Conservancy is a regionally governed agency created to develop and manage the San Joaquin River Parkway, a planned 22-mile natural and recreational area in the floodplain extending from Friant Dam to Highway 99.

The Conservancy's mission includes acquiring approximately 5,900 acres from willing sellers; developing, operating, and managing those lands for public access and recreation; and protecting, enhancing, and restoring riparian and floodplain habitat.

# SJRC Act

The San Joaquin River Conservancy is an agency of the State of California created by the State Legislature in 1992 to create the San Joaquin River Parkway.

## Public Resources Code §32500 et seq

32529 The conservancy may manage, operate, administer, and maintain the parkway and its facilities. Land acquired by the conservancy shall not be open to public use until the board determines there are adequate funds available for the management of those lands. The conservancy may adopt regulations governing the use by the public of conservancy lands and may provide for their enforcement.

32511 The conservancy shall be responsible for operation and maintenance of the parkway. The conservancy shall close to the public any lands or facilities which it is unable to maintain in a clean and safe manner and to adequately protect the wildlife and rights of adjacent property owners from the public, including areas downstream from the Highway 99 crossing affected by the use of the parkway.

(Added by Stats. 1992, Ch. 1012, Sec. 1. Effective January 1, 1993.)

# State Agency

SJR Conservancy has the authority to acquire, manage and operate land. Make improvements up to \$1.205 M

State agencies are required to utilize state agencies to oversee engineering and construction on state land.

Dept. of Finance

As an example:

DGS, Department of General Services has the authority and must design and construct any project on state lands that is \$1.205 M or more. Any improvement that "touches the land". This would include restoration, trail building, construction of buildings, parking lots and similar.

DWR –

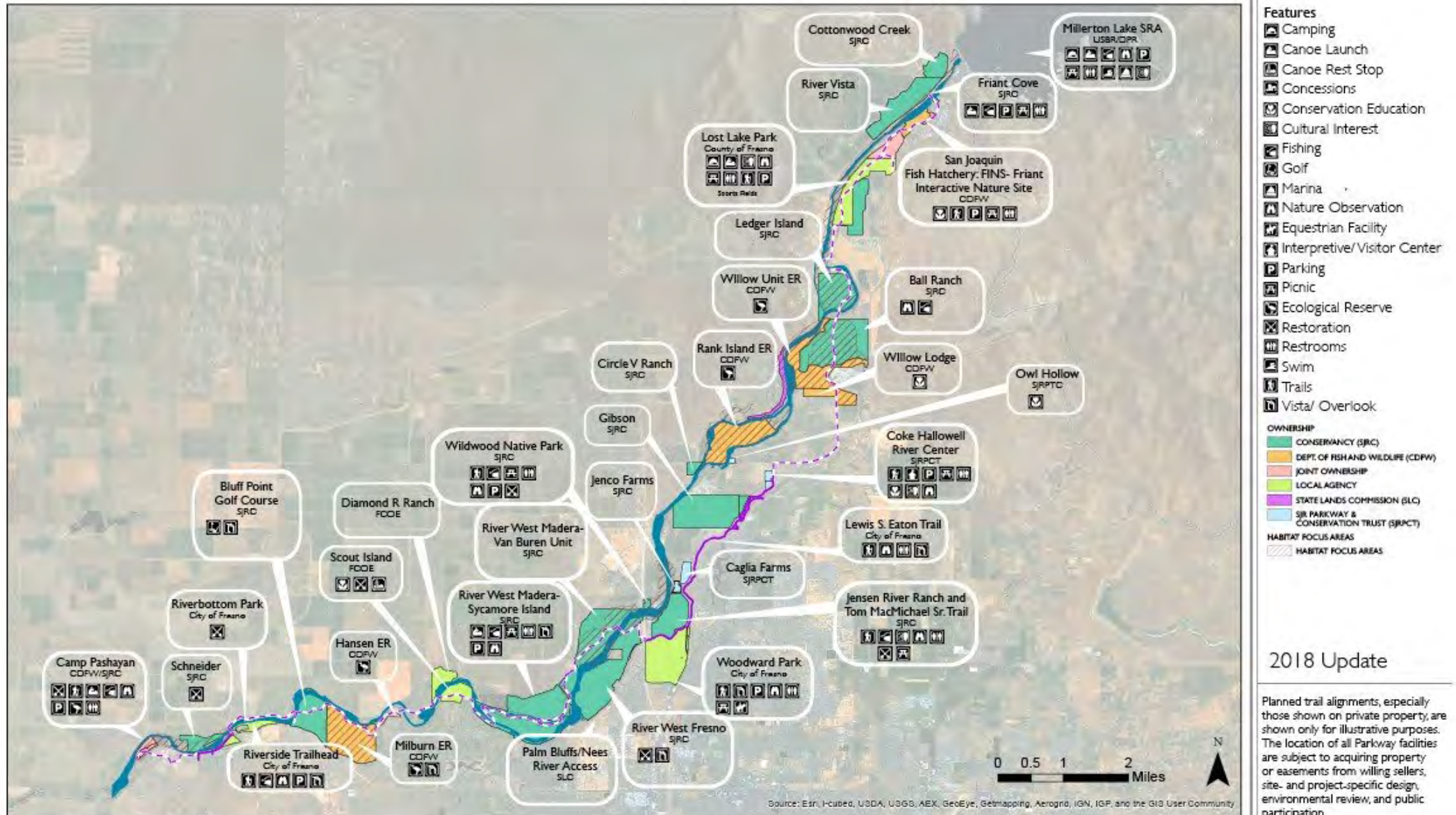
Other agencies with construction authority are CalTrans and State Parks, but these are not as feasible options.



The Conservancy can get public input and inform the process by doing basic renderings.

&

pass the baton to appropriate state agency to complete design, environmental compliance and oversee the construction.







# Summary of properties

- ▶ 2,712 acres with SJRC
- ▶ 854 acres with title held by partnering agencies/organizations
- ▶ Total 3,566
  - ▶ over halfway to the 5,900 goal in our mission

# Parkway Partner properties

CA Department Fish and Wildlife (CDFW)		Fresno (Acres)	Madera (Acres)
Hansen Unit San Joaquin River Ecological Reserve (ER)		34	0
Lost Lake Park (see also County of Fresno)		76	0
Rank Island Unit SJR ER		270	0
SJ Fish Hatchery, FINS		59	0
Milburn Unit SJR ER	1989	286	0
Willow Unit SJR ER (1)	1990	149.67	0
Willow Unit SJR ER (2)	1992	88.23	0
Camp Pashayan Unit SJR ER**	1995/2012	20	0
<b>Total</b>	<b>959.25</b>	<b>959.25</b>	<b>0</b>
SJRiver Parkway & Conservation Trust		Fresno (Acres)	Madera (Acres)
Coke Hallowell River Center		20	0
Spano Remnants 2003 6.00 0.00 0.00	2003	6	0
Owl Hollow 2005 5.00 0.00 0.00	2005	5	0
Caglia Farms 2006 28.20 0.00 0.00	2006	28.2	0
<b>Total</b>	<b>59.2</b>	<b>59.2</b>	<b>0</b>
American Farmland Trust		Conservation Easement	
Hansen Conservation Easements		95	0
<b>Total</b>	<b>95</b>	<b>0</b>	<b>0</b>
Fresno County		Fresno (Acres)	Madera (Acres)
Lost Lake Park (see also CDFW)		191.66	0
Friant Road Scenic Lands (Eaton Trail)		141	0
<b>Total</b>	<b>332.66</b>	<b>332.66</b>	<b>0</b>
Fresno County Office of Education		Fresno (Acres)	Madera (Acres)
Scout Island	2000	84.66	0
Diamond R Ranch	2000	0	68
<b>Total</b>	<b>152.66</b>	<b>84.66</b>	<b>68</b>
City of Fresno		Fresno (Acres)	Madera (Acres)
Riverbottom Park	1999	35	0
<b>Total</b>	<b>35</b>	<b>35</b>	<b>0</b>
US Bureau of Reclamation		Fresno (Acres)	Madera (Acres)
Friant Dam Access Areas		137.5	137.5
<b>Total</b>	<b>275</b>	<b>137.5</b>	<b>137.5</b>
Parkway Partner Total		Fresno (Acres)	Madera (Acres)
<b>Total</b>	<b>854.52</b>	<b>649.02</b>	<b>205.5</b>

# Summary of SJRC Owned & Open Properties

<b>Open properties for public access</b>	<b>Acres</b>	<b>O&amp;M by</b>
Bluff Point	34	Leasee
Friant Cove	3	State Parks
Jensen River Ranch	156	City of Fresno
Sycamore Island	347	San Joaquin River Parkway and Conservation Trust
Van Buren	262	San Joaquin River Parkway and Conservation Trust
<b>Total SJRC Owned Acres Open for Public Access</b>	<b>802</b>	

# SJRC Owned Closed Properties

<b>Closed Properties owned by SJRC</b>	<b>Arces</b>	<b>Managed by</b>
Ball Ranch	358	SJRC
Beck	106	SJRC
Camp Pashayan	31	SJRC & CDFW
Circle V	21	SJRC
Cobb	12	SJRC
Gibson/Vulcan	321	SJRC
Jenco Farms	23	SJRC
Lanes	23	SJRC
Ledger Island	161	SJRC
Liddell	100	SJRC
River West - Fresno	341	SJRC
Schneider	47	SJRC
Wildwood	22	SJRC
River Vista	177	State Parks
Wagner/Cottonwood Creek	64	State Parks
Total acres SJRC owned currently not open	<b>1807</b>	SJRC owned
<b>Total acres closed property - SJRC responsibility to manage</b>	<b>1566</b>	<b>SJRC management responsibility</b>

# Properties in the design phase

<b>Closed Properties owned by SJRC</b>	<b>Arces</b>	<b>Managed by</b>	<b>Phase</b>	<b>Design by</b>
Ball Ranch	358	SJRC	design	Trust w/ SJRC
Camp Pashayan	31	SJRC & CDFW	design	Building Healthy Communities
Circle V	21	SJRC	design	USGBC - SJRC - DGS
Gibson/Vulcan	321	SJRC	design	Vulcan designing reclamation
River West/Spano	341	SJRC	design	City of Fresno
River Vista	177	State Parks	design	County of Fresno
<b>Total acres in design</b>	<b>1249</b>			

**69% of SJRC currently closed acreage is in the design phase**

# 5 Residential Houses

- ▶ Lanes
- ▶ Gibson
- ▶ Circle V main
- ▶ Circle V smaller
- ▶ Wagner



# Areas for Improvements

- ▶ Ledger Island - bridge access from Ball Ranch to Ledger Island is unsound
  - ▶ Bridge Assessment and Alternatives for next steps - DWR in 2015
  - ▶ Bridge Closed signs posted in English and Spanish
- ▶ Ball Ranch – log deck is 500 feet long and 18 feet tall in places
  - ▶ The length of almost 2 football fields and a 2-story building in places
- ▶ Bridge at Wildwood- Homeless encampments, carved the underpinnings
- ▶ Broken Bridge at River Vista- Rebar and obstacles (County of Fresno is the lead agency)
  - ▶ Bridge replacement on Road 206 in Friant
- ▶ Property at Circle V - House is structurally unsound, abandoned pool, house suffered flooding damage, mold



# Largest Opportunities

- ▶ Circle V – public accessibility
- ▶ River West – open
- ▶ Wildwood - update facility and open 7 days a week
  - ▶ With janitorial and security services
- ▶ Ball Ranch - opening
- ▶ Camp Pashayan – public access
- ▶ Jensen River Ranch – visitor improvements - remove unnecessary fencing
- ▶ Jensen River Ranch extension(Jenco)– coordinate with City of Fresno for O&M
  - ▶ Continue coordination for Measure P opportunities
- ▶ Lanes master plan and improvements - office and/or events





# High Priority Planning Work

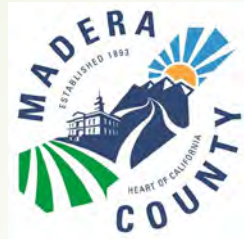
- Develop a Strategic Plan
  - Property management plans
  - Vegetation management
  - Fire Fuel reduction plan
  - On-going maintenance plan
- CEQA process plan
- Staffing needs assessment
- Funding plan/ ask



# Partners and Volunteers the key to making the Parkway a reality

- RiverTree Volunteers
  - California Conservation Corps
  - Sierra Resource Conservation District
  - Fresno Canoe and Kayak Club
  - San Joaquin River Parkway and Conservation Trust
  - Advocates for Indigenous California Language Survival
  - City of Fresno – public works
- 

Thank you to those that did not present today but play a huge roll in helping accomplish the Conservancies mission.



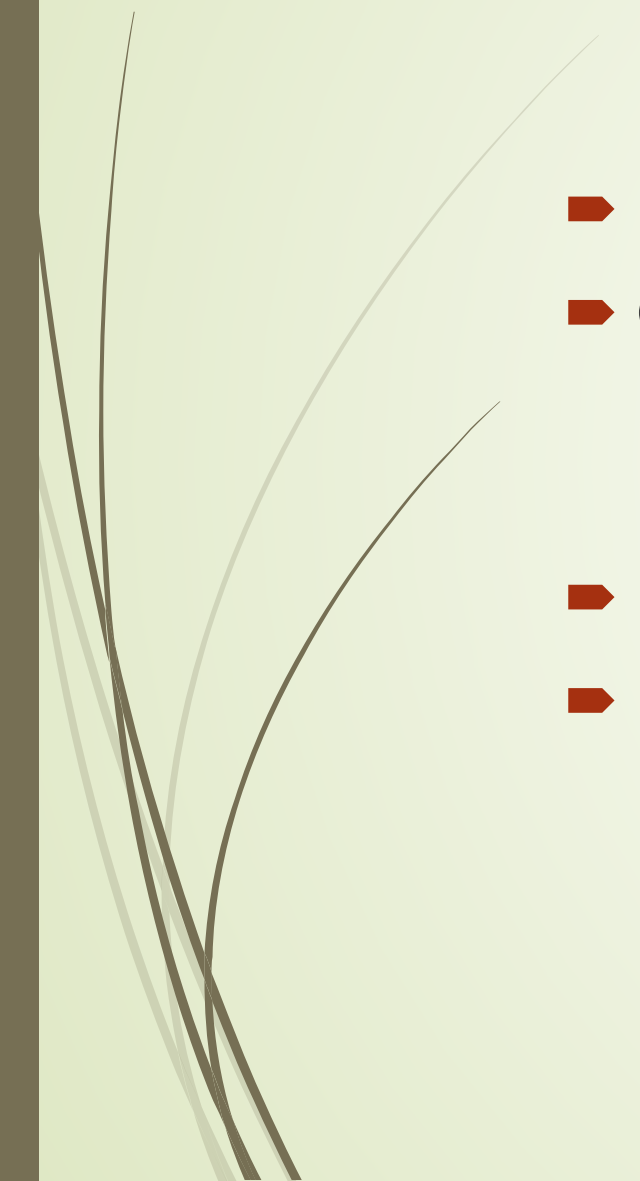
# Q and A



➤ Break time



# Grantees and other project partners

- ▶ Building Healthy Communities
  - ▶ Circle V
    - ▶ Green Building Council, Central California
    - ▶ Advocates for Indigenous California Language Survival
  - ▶ River Partners
  - ▶ National Fish and Wildlife Foundation (NFWF)
- 

# Budget – Summary of Funded projects

Agreement #	Project Title	Grantee	Grant Term	Award Amount	Status
WC-1926HW	Ball Ranch Habitat Restoration Planning and CEQA	River Partners	11/21/2019-09/30/2023	\$375,690	Ongoing
WC-2016EA	Ball Ranch Managed Aquifer Recharge Planning	River Partners	06/25/2021-06/30/2023	\$324,317	Project closeout in process
WC-2088AD	Circle V (Vinnard) Public Access Plan	US Green Building Council Central CA	02/25/2021-10/30/2024	\$1,050,000	Suspended except for Outreach
WC-1927HW	Milburn Pond CEQA and Pond Isolation Design	Department of Water Resources	11/21/2019-03/15/2023	\$622,512	Complete but not closed.
WC-2211EA	River West Fresno Eaton Trail Extension Planning	City of Fresno	01/07/2022-12/12/2023	\$3,104,831	Ongoing
WC-2087AD	Western Reaches Access Planning	Fresno Building Healthy Communities	06/24/2021-12/31/2023	\$1,519,000	Ongoing

# Current Budget & Bond Funds Overview

Account	Beginning Balance	Projects	Amount Available
Prop 40 (6029)	\$4,991,881	-\$4,785,853	\$172,000
Prop 84 (6051)	\$9,850,262	-\$9,302,065	\$ 548,197
Prop 68 (6088)	\$5,550,000	\$0	\$ 5,550,000
Prop 1 (6083)	\$9,300,000	-\$3,518,916	\$5,781,088
Total Amount	\$ 29,692,143	- \$17,606,829	\$12,085,314

Account/Bond	AKA	Focus	Requirements
Prop 40		Clean Air, Clean Water, Parks, Coast	Acquisition, development, rehabilitation, restoration, and protection of land and water resources; for grants and administrative costs
Prop 84		Natural Resources	Protection of water quality and the environment; allocation for the San Joaquin River
Prop 68	Park Bond (2018)	Drought, Water, Parks, Climate	Public access projects; 35% of funds must serve an SDAC
Prop 1	Water Bond (2014)	Water Quality	Habitat restoration and enhancement projects; must be implementation

# Potential Projects

Project	Estimated cost
Western Reaches & Camp Pashayan	TBD
Milburn Pond	\$10 million
River West Fresno	\$12 to \$13 million
Ledger Island Bridge	\$8 to \$10 million
Bridge Remnants Removal	\$1 to \$ 2 million
Circle V	\$40 million
Office Space at Lanes	TBD
Road Improvements to Camp Pashayan	\$300,000.00





# Fiscal Year 2023-2024 Budget

## ➤ **Operations and Program Delivery:**

- Main Support Budget (Environmental License Plate Fund): \$413,000
- San Joaquin River Conservancy Fund: \$190,000
- Program Delivery Budget: \$525,000
- Grand Total \$1,141,000

## ➤ **General Fund**

- FY 21/22: \$1.3 million
- FY 22/23: \$1.5 million
- FY 23/24: \$1 million

# Budget, Ongoing Maintenance & Security Costs and Projected Costs

Ongoing Operations and Maintenance	Estimated Cost per year
O&M for Friant Cove	\$65,000.00
Wildwood Native Park (Janitorial and Security)	\$50,000.00
Fire Abatement Services ( 4 properties)	\$30,000.00
Utilities (PG&E ,Water, and Trash)	\$24,000.00
Gate Repairs	\$10,000.00
Supply purchases	\$15,000.00
Truck Rental	\$6,400.00
Portable Toilets and Handwashing Stations	\$37,000.00
Grand Total	\$237,400.00

- ▶ The projected expense for FY 23-24 is \$928,244.00
  - ▶ Includes staff salaries and benefits, utilities, WCB contract, DPR contracts, and legal counsel.

## Onetime Operation and Maintenance Funding

- The Conservancy received \$15 million through the Budget Act of 2021-22.
- Provisions:
- The amount appropriated in Schedule (1) shall be available for operation and maintenance of conservancy-owned lands.
- These funds shall be available for encumbrance or expenditure until June 30, 2024, and for liquidation until June 30, 2026.

\$15 Million Budget	
Beginning Balance	\$15,000,000.00
Contract and Agreements	-\$8,067,437.97
SJRC Staff	-\$560,000.00
Supplies	-\$43,620.30
Total Spent	\$8,671,058.27
Remaining Balance	\$6,328,941.43

Thank You!!  
and Questions

